

**County of Ouray
MANAGEMENT PLAN
For
The Corkscrew Turntable
Mona Queen and Little Mona Patented Mining Claims
Red Mountain Mining District
Ouray County CO**

June 8, 2016 DRAFT

On September __, 2016, the County of Ouray accepted donation of 100% fee title and mineral interest in two patented mining claims in the Red Mountain Mining District, so that the historic Corkscrew Turntable, and a portion of the historic railroad grade of the Silverton Railroad contained within the two properties could be permanently conserved and protected in the state they are currently found. In advance of agreeing to receive donation, the Ouray Board of County Commissioners (BOCC) asked the Ouray County Historical Society (OCHS), in recognition of its expertise, interest, and ability, to assume responsibility for managing the Corkscrew Turntable Claims, on behalf of the County. This plan is meant to serve as both a framework for, and an agreement between, Ouray County and OCHS, for that management.

**COUNTY OBJECTIVES; PROERTY LOCATION; PARTNERS; PROJECT
BACKGROUND; AND GENERAL CONSIDERATIONS:**

In recognition of the historical significance of the Silverton Railroad and the Corkscrew Turntable, and aware of increasing development pressure in the Alpine Zone of Ouray County, the BOCC desires to conserve and protect the Mona Queen and Little Mona patented mining claims in the condition they are found at the time the County obtained ownership.

The properties are located in the Red Mountain Mining District of Ouray County, along the historic railroad grade of the Silverton Railroad, east of US 550, approximately one mile north of County Road 31, at the end and about ¼ north of the Guston Road.

Partners in the project include the Trust for Land Restoration, members of the Red Mountain Task Force, the Ouray County Historical Society, private citizens, and US Senator Michael Bennet.

The properties were acquired by TLR from the Greenfield Multistate Environmental Trust (Greenfield), with a grant from the Toan-O'Brien Foundation, Sante Fe NM, with the intent to donate the two claims to the County of Ouray. The BOCC, at its May 3, 2016 meeting, asked OCHS to consider assuming management responsibility of the turntable claims, once the County became owner. OCHS, at the May meeting of its Board of Directors, agreed in concept to accept management responsibility of the turntable claims, subject to its review and approval of this management plan.

As background, in 2011 Greenfield was appointed by the court overseeing the bankruptcy of the Tronox Corporation, a former subsidiary of Kerr–McGee Corporation, to take possession, for the purposes of selling, sixteen patented mining claims in Ouray County and 84 claims in San Juan County to whomever Greenfield deemed an appropriate buyer, on behalf of beneficiaries of the trust, including the United States Environmental Protection Agency (US EPA) and the United States Department of Justice (US DOJ).

Local citizens, including Bob Risch, Ben Tisdell (prior to becoming an Ouray County Commissioner), and TLR's Patrick Willits, along with San Juan County Administrator William Tookey, then-San Juan County Treasurer Bev Risch, Ryan Bennett, a private landowner, and John Whitney of US Senator Michael Bennet's office met either in person or via telephone with representatives of Greenfield in the fall of 2013 and again the spring of 2014, to strategize some sort of conservation/protection of the former Tronox claims. As a result, TLR, with the aforementioned support of Toan-O'Brien Foundation, began to work with Greenfield to acquire all sixteen of the former Tronox claims located in Ouray County.

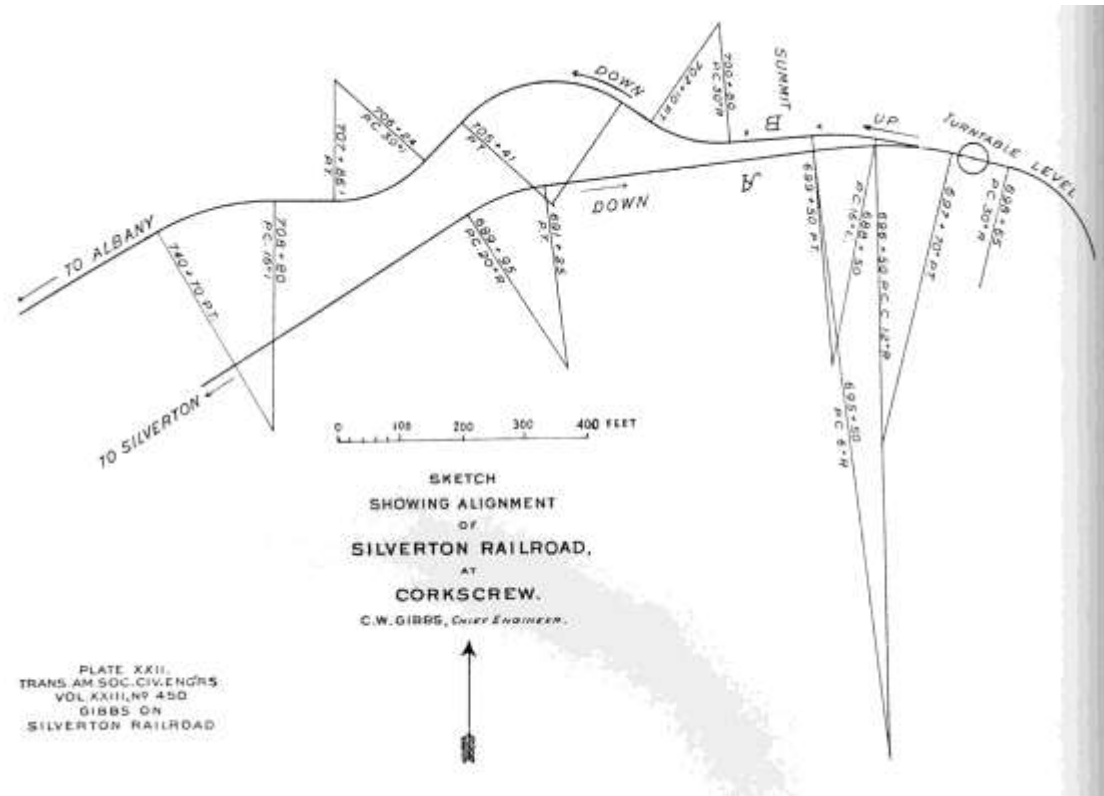
In December 2015, TLR acquired and donated 14 of the former Tronox claims to the United States Forest Service. TLR *has donated* the remaining two claims, the Mona Queen and the Little Mona, to the County of Ouray. The two claims are entirely surrounded by property of the United States, including three of the 14 claims donated to the USFS by TLR at the end of last year.

OCHS had considered accepting donation of the two turntable claims, but was not able to reach mutual agreement with Greenfield on language to be included in the Quit Claim Deed transferring title from Greenfield to the society. Ouray County Attorney Marti Whitmore reviewed the proposed Quit Claim Deed transferring the properties to County of Ouray, suggested additional language to protect the County, and reached agreement with Greenfield.

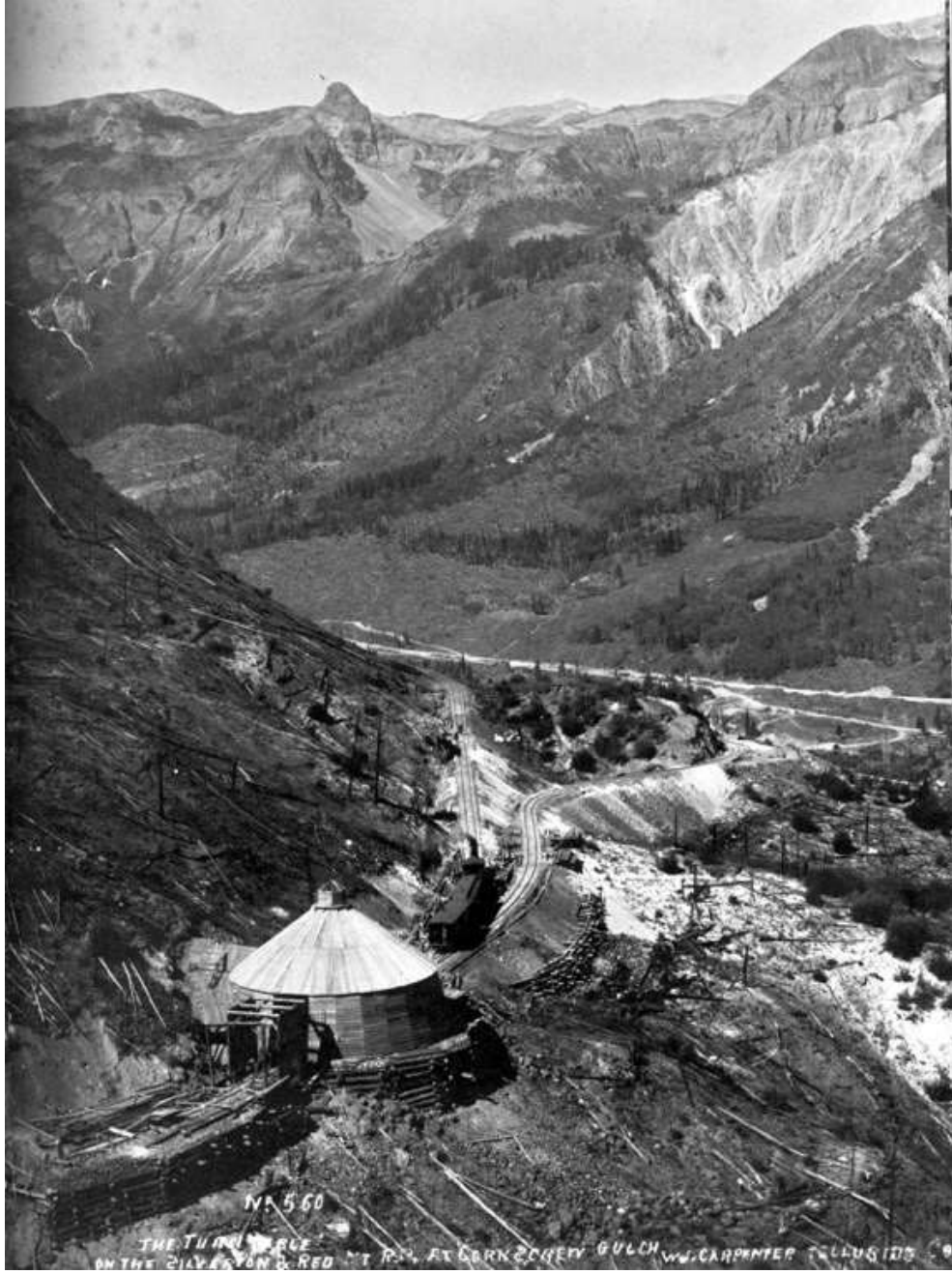
Private-citizen and local landowner Ryan Bennett in San Juan County has agreed to purchase all eighty-four of the Tronox claims found in San Juan County, and to voluntarily deed-restrict or otherwise agree to limit all residential development of the properties. Bennett's deal has yet to be approved by the US EPA and the US DOJ.

necessary to have the engine positioned at the correct end of the train, when switching the various mining spurs. Gibbs's solution was to place a turntable on the mainline.

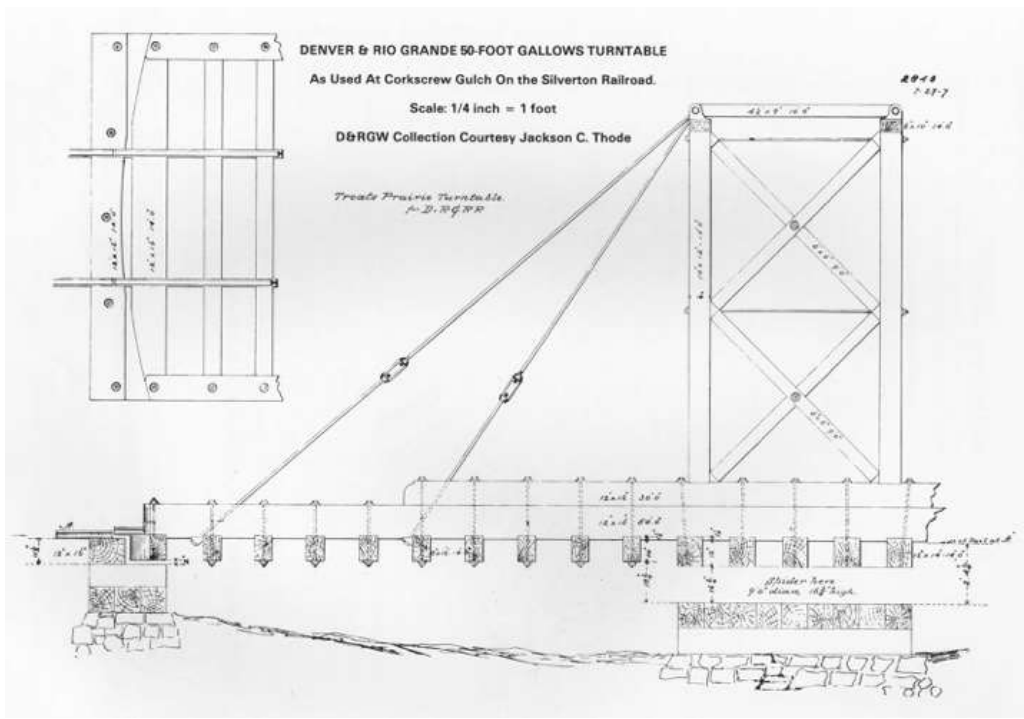
The Corkscrew Gulch Turntable is reputed to be the only turntable ever constructed on the main line of a US railroad. (Construction engineer) Charles Gibbs described the operation of the turntable in a famous article in the *Transactions of the American Society of Engineers* in September of 1890. A typical train had from three to five cars. The figure below shows the trackage at the turntable. The track grade leading onto the turntable was downhill to the turntable in both directions allowing the cars to run through the turntable by gravity after the engine was turned. So the grade coming up from Ironton actually climbed a few feet higher in altitude than the turntable so that the approach to the turntable was always downgrade.



A train coming upgrade from Albany would stop at point B, the engine would be uncoupled, run onto the turntable, turned and then run to point A. The cars would then be run through the turntable by gravity and the engine would re-couple to these cars and proceed upgrade to Silverton with the engine in front. Similarly, a train coming downgrade from Silverton would stop at point A. The engine would be uncoupled, run onto the turntable, turned and then run to point B. The cars would be allowed to run through the turntable by gravity and the engine would couple on to them and precede downgrade to Albany with the engine in front. The entire process took about five minutes.



NO. 550
THE TURNING PLACE
ON THE SILVER STAR R. R. AT BARKSCHERRY GULCH W. J. CARPENTER TELUS 105



Likewise, the current condition of the turntable remnants and approaching railroad grade found on US Forest Service property is well documented, as evidenced by the photos below:



MANAGEMENT OBJECTIVES

The primary management objective for the Corkscrew Turntable and the section of the railroad grade leading to the property is to maintain the turntable and railroad grade in its current condition, to the largest extent possible. A corollary to that objective is to provide a minimum amount of signage and interpretation to protect the property, promote education and understanding, allow for the passive enjoyment and appreciation of the site by visitors, and to restrict cars, motor vehicles, ATVs, horses and bicycles from going beyond the parking area at the end of the Guston Road, about ¼ mile south of the turntable site.

MANAGEMENT RESPONSIBILITIES

By being a signatory to this plan, Ouray County Historical Society is agreeing to monitor this site by visiting the site at least twice per year; seeing that some level of signage and barriers are in place to prevent unwanted motor vehicle/horse/bicycle access; providing a level of interpretation that OCHS deems appropriate; alerting the BOCC to signs of man-made or natural erosion or other damage that may threaten the integrity of the site and/or the cultural artifacts the site contains; alerting county staff if noxious weeds are found; and preparing a brief, written, update/monitoring report to the BOCC on an annual basis.

There may be other items or issues that come to the attention of either OCHS or the BOCC, which may be needed to be addressed, as appropriate. OCHS may propose projects or amendments to this plan at any time. This plan will be reviewed and updated, as needed, at least every five years, upon the initiation of OCHS. Either party shall have the option, at the time of any five year review, to release OCHS from further management responsibilities, if either party deems doing so to be in the best interest of further protection of the site.

APPROVAL

This Management Plan for the Corkscrew Turntable Site, Mona Queen and Little Mona patented mining claims, is hereby approved by the Ouray County Board of Commissioners and by the Ouray County Historical Society, for a term of five years from the date of acceptance.

Ouray County

Chairperson, Board of Commissioners

Date

Ouray County Historical Society

President

Date